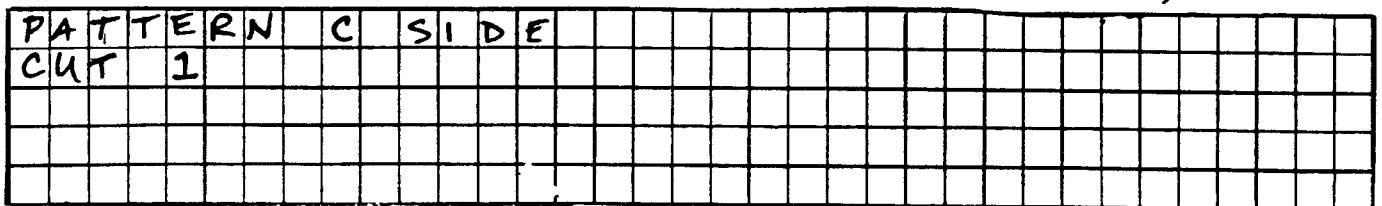
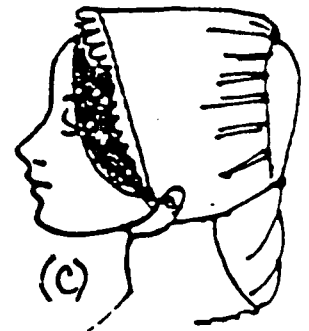
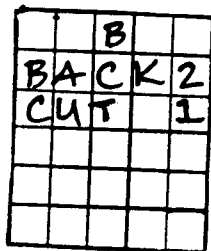
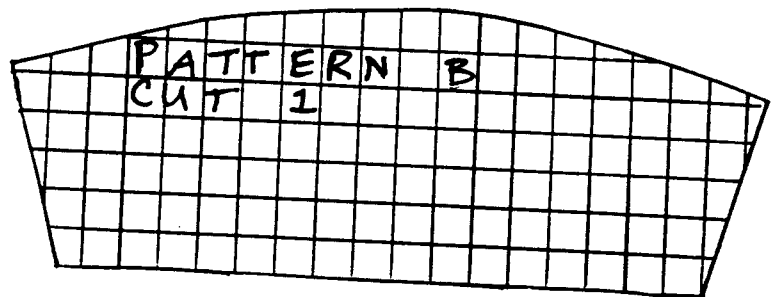
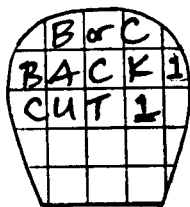
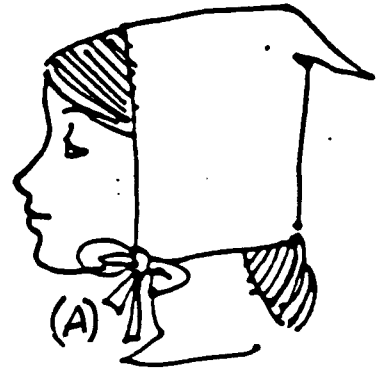
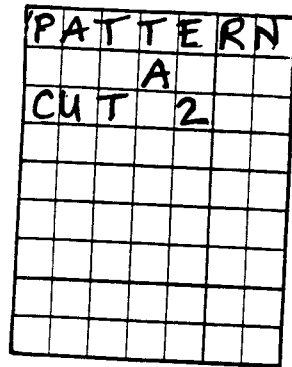


# Biggins Cap

Biggins were called that because they were the "beginning" cap placed on infants.

They were worn by all classes, ages and sexes. Biggins can be worn alone or under a flat cap or straw hat.



Suggested fabrics: cotton or linen; the higher your character's station, the finer the weave. Middle class and nobility may have a lace trim. White and off-white were the most common colors.

More can be learned from the book Elizabethan Costuming for the years 1550-1580 by Janet Winter & Carolyn Savoy

